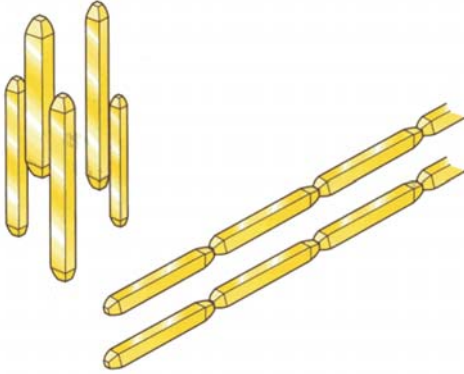




Phoenix Electronics Distribution Ltd.

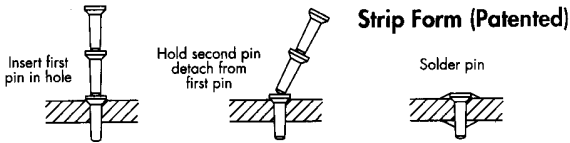
Castlehill Industrial Estate
 Carlisle ML8 5UF
 Tel 01555 751566 Fax 01555 751562

SQUARE TERMINAL PINS 0.635mm

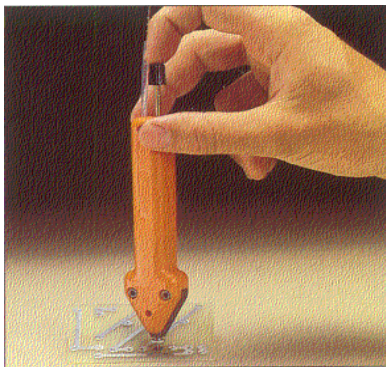


TRACK PINS

Track pins provide an economical connection between tracks on opposite sides of pcbs without through hole plating. Available in continuous strip form for fast assembly with no special tooling required. Strip form pins are supplied in multiples of 2500 with approximately 50 pins per length. Pin material - brass, plated 90/10 tin/lead on nickel.

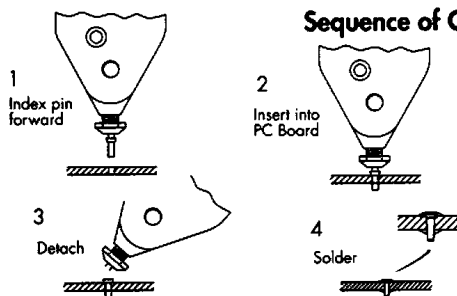


TRACK PIN INSERTER



Order Code

Z1002-00



Sequence of Operations

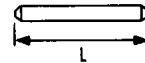
A series of 0.635 mm square posts for wrapping, connector, or test point applications. The diagonals of all posts are suitable for miniature wrap tooling. All posts are a press fit into the recommended hole sizes. Hand held insertion tool Z1016-XX may be used.

MATERIAL:

Pins: Phosphor bronze
 Finish: Gold on nickel, Tin on nickel

Plain Pin

Suitable for $\varnothing 0.74 \pm 0.05\text{mm}$ hole supplied loose in multiples of 100. Insert pin into top tool, locate and press home.

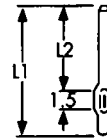


Dim

12.4
 16.3

Single Sided Star Pin

Suitable for $\varnothing 0.80 \pm 0.05\text{mm}$ hole supplied in joined strips in packs of 1000. Insert, snap off and press home.

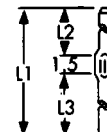


Dim Dim

L1 L2
 10.5 7.6
 12.4 9.7
 16.3 13.2

Double Sided Square Star Pin

Suitable for $\varnothing 0.80 \pm 0.05\text{mm}$ hole supplied in joined strips in packs of 1000. Insert, snap off and press home.



Dim Dim Dim

L1 L2 L3
 16.3 9.7 5.1
 19.6 13.2 4.9

Order Code

Gold

8L251G4900
 8L251G6400

Tin

8L251F4900
 8L251F6400

Hand Tool

Z1016-38
 Z1016-52

Order Code

Gold

8S252G4130
 8S252G4938
 8S252G6452

Tin

8S252F4130
 8S252F4938
 8S252F6452

Hand Tool

Z1016-30
 Z1016-38
 Z1016-52

Order Code

Gold

8S252G6438
 8S252G7752
 8S252G9652

Tin

8S252F6438
 8S252F7752
 8S252F9652

Hand Tool

Z1016-38
 Z1016-52
 Z1016-52

Order Code	PCB Hole \varnothing +0/-0.03	PCB Board Thickness	Overall Pin Length
T1558-01	0.83	0.79	2.72
T1559-01	0.83	1.59	3.48
T1563-01	1.00	1.59	3.48
T1564-01	1.00	2.38	4.27
T1565-01	1.00	3.17	5.08

Remember to register for samples and application assistance.